

About the New Jersey Invasive Species Strike Team

The New Jersey Invasive Species Strike Team (NJISST) is a statewide, non-profit organization with a mission *to prevent the spread of emerging invasive species across the state of New Jersey*. Started in 2008 as the Central Jersey Invasive Species Strike Team, the project has now expanded statewide and is the first cooperative effort in NJ aimed at controlling invasive species. The Strike Team utilizes the method of Early Detection & Rapid Response to combat the onslaught of newly emerging invasive species before they can cause significant ecological damage to our forests. We all know the serious impacts created by Japanese barberry, multiflora rose, Japanese stiltgrass and other widespread invasive species. Through cooperative efforts, we can thwart the numerous additional species that are beginning to emerge on our landscape.

We encourage any public or private agency, organization, business, or individual to contact us about joining the NJISST partnership. Together, we can Nip Invasive Species in the Bud!

For additional resources and more information, visit our website below.

New Jersey Invasive
Species Strike Team
P.O. Box 5752
Hillsborough, NJ 08844
www.njisst.org

Printed with soy-based inks on paper containing
10% post-consumer waste. Please recycle.



GO NATIVE!



Symphotrichum novae-angliae
(New England aster)

Invasive species cost an estimated \$137 billion in annual losses in the United States. In fact, plants and animals that spread outside their native habitats and displace native species are the leading threat to biodiversity worldwide, second only to outright habitat destruction.

The Strike Team is working to remove invasive plants and needs your help. The only way to stop invasive plants is to eliminate the seed source. **PLEASE** do your part – destroy any invasive plants that are growing on your property and replace them with native plants. **DO NOT** purchase invasive plants!

Native Plants Provide Many Benefits!

- Natives require little to no fertilizer which is critical for the protection of water quality in our streams, rivers, ponds and drinking water.
- Natives have low water requirements – they typically don't need extra watering between rain storms.
- Natives provide much-needed food sources and shelter for native wildlife.

You May Face Some Challenges When Growing Native Plants...

- **Deer overpopulation:** It is true that deer usually prefer native plants over invasives. Fencing and deer repellents will help protect your native plants as New Jersey's wildlife professionals and policy-makers struggle to find solutions to manage the overabundant deer population that is threatening biodiversity in our landscapes.
- **Availability:** Native plants are available from specialty nurseries, growers, and conservation groups, as well as an ever increasing number of retail stores. Many conservation groups sell native plants at seasonal fundraisers.

A Selection of Native Plant Resources

Kuperus Farmside Garden, Sussex
Steinbeiser's Farm & Native Plant Nursery, Frenchtown
Toadshade Wildflower Farm, Frenchtown
Scherman-Hoffman Wildlife Sanctuary, Bernardsville
Leonard J. Buck Gardens, Far Hills

Bowman's Hill Wildflower Preserve, New Hope, PA
Edge of the Woods Native Plant Nursery, Orefield, PA
D&R Greenway, Princeton
Northeast Natives & Perennials, Quakertown, PA
Redbud Native Plant Nursery, Glen Mills, PA

3 Easy Steps to Rid Invasive Plants From Your Landscape

1

DO NOT Purchase Invasive Plants

Despite the fact that invasive plants are causing great damage to ecosystems, they are still available at nurseries.

If the public continues to purchase invasive plants, the nurseries will continue to sell them.

If the public demands native plants, they will become more readily available.

Start demanding natives!

2

Remove Invasive Plants from Your Property

Identify the plants on your property that are considered invasive. They may be planted in your landscape or sprouting up as “weeds.”

Techniques to remove invasive plants

- Small plants and weeds can be pulled by hand or smothered by a heavy layer of mulch.
- Larger shrubs and trees can be cut down to stumps. Allow each stump to re-sprout and spray the new leaves with a foliar herbicide. As an alternative, dig up shrubs and trees, remembering that small pieces of root can re-sprout. Continue to pull seedlings as seeds may continue to germinate for many years.

Common Invasive Plants Used in NJ's Landscape

(complete “Do Not Plant” list available at www.njst.org)



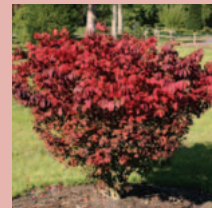
Japanese Barberry
(*Berberis thunbergii*)



Chinese Silver Grass
(*Miscanthus sinensis*)



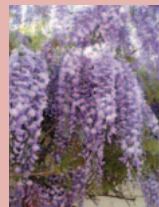
Linden Viburnum
(*Viburnum dilatatum*)



Burning Bush
(*Euonymus alatus*)



Purple Loosestrife
(*Lythrum salicaria*)



Japanese Wisteria
(*Wisteria*)



English Ivy
(*Hedera helix*)



Callery Pear
(*Pyrus calleryana*)



Butterfly Bush
(*Buddleja davidii*)

3

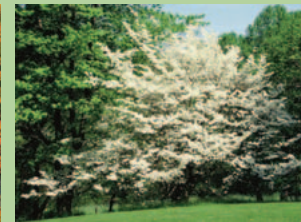
Grow plants that are native to New Jersey

There are many native plants to choose from and a variety of online sources to help you learn about native alternatives to invasive plants. To help you get started, here is a list of commonly available native plants:

Trees



Birch (*Betula*)



Flowering Dogwood
(*Cornus florida*)



Redbud
(*Cercis canadensis*)



Serviceberry
(*Amelanchier*)

Shrubs



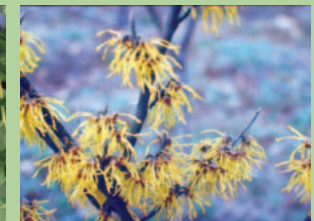
Arrowwood
(*Viburnum dentatum*)



Winterberry Holly
(*Ilex verticillata*)



Blueberry
(*Vaccinium corymbosum*)



Witchhazel
(*Hamamelis virginiana*)

Flowers & Ferns



Butterfly Milkweed
(*Asclepias tuberosa*)



Beebalm
(*Monarda fistulosa*)



Beardtongue
(*Penstemon hirsutus*)



Christmas Fern
(*Polystichum acrostichoides*)

Some exotic plants have the same common names as native plants. When shopping, check the scientific names of the plants to ensure that they are the native variety before you make your purchase!